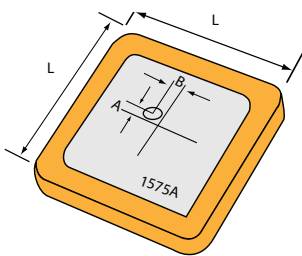


Standard Specifications

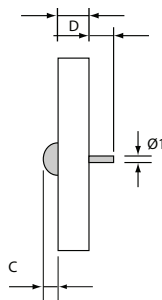
| Part Number | Dimensions (mm) | | | | | | | Nominal Centre Frequency (MHz) | -10dB Bandwidth (MHz) | VSWR at CF (Max) (RL at CF dB) | Polarization Model | Impedance (Ω) |
|---------------|-----------------|-----|-----|-----|-----|-----|-----|--------------------------------|-----------------------|--------------------------------|--------------------|---------------|
| | L | H | A | B | C | D | Φ1 | | | | | |
| DAE1575R3530A | 35x35 | 3.0 | 4.5 | 0 | 0.6 | 3.2 | 0.8 | 1575.42 ±1.023 | 15 | 1.5 (-14.0) | RHCP | 50 |
| DAE1575R2540A | 25x25 | 4.0 | 2.5 | 0 | 0.6 | 3.3 | 0.8 | 1575.42 ±1.023 | 15 | 1.5 (-14.0) | RHCP | 50 |
| DAE1575R2540B | 25x25 | 4.0 | 1.7 | 1.9 | 0.6 | 3.3 | 0.8 | 1575.42 ±1.023 | 15 | 1.5 (-14.0) | RHCP | 50 |
| DAE1575R2520A | 25x25 | 2.0 | 2.5 | 0 | 0.6 | 3.0 | 0.8 | 1575.42 ±1.023 | 8.0 | 1.5 (-14.0) | RHCP | 50 |
| DAE1575R2520B | 25x25 | 2.0 | 1.7 | 1.9 | 0.6 | 3.0 | 0.8 | 1575.42 ±1.023 | 8.0 | 1.5 (-14.0) | RHCP | 50 |
| DAE1575R2040A | 20x20 | 4.0 | 1.6 | 0 | 0.6 | 3.2 | 0.8 | 1575.42 ±1.023 | 6.0 | 1.5 (-14.0) | RHCP | 50 |
| DAE1575R2020A | 20x20 | 2.0 | 1.6 | 0 | 0.6 | 3.2 | 0.8 | 1575.42 ±1.023 | 5.0 | 1.5 (-14.0) | RHCP | 50 |
| DAE1575R1840A | 18x18 | 4.0 | 1.1 | 0 | 0.6 | 1.9 | 0.8 | 1575.42 ±1.023 | 5.0 | 1.5 (-14.0) | RHCP | 50 |
| DAE1575R1840B | 18x18 | 4.0 | 1.4 | 0 | 0.6 | 3.3 | 0.8 | 1575.42 ±1.023 | 5.0 | 1.5 (-14.0) | RHCP | 50 |
| DAE1575R1820A | 18x18 | 2.0 | 1.1 | 0 | 0.6 | 1.9 | 0.8 | 1575.42 ±1.023 | 5.0 | 1.5 (-14.0) | RHCP | 50 |
| DAE1575R1820B | 18x18 | 2.0 | 1.4 | 0 | 0.6 | 3.3 | 0.8 | 1575.42 ±1.023 | 5.0 | 1.5 (-14.0) | RHCP | 50 |
| DAE1575R1540A | 15x15 | 4.0 | 1.1 | 0 | 0.6 | 1.9 | 0.8 | 1575.42 ±1.023 | 5.0 | 1.5 (-14.0) | RHCP | 50 |
| DAE1575R1520A | 15x15 | 2.0 | 1.1 | 0 | 0.6 | 1.9 | 0.8 | 1575.42 ±1.023 | 4.0 | 1.5 (-14.0) | RHCP | 50 |
| DAE1575R1340A | 13x13 | 4.0 | 0.9 | 0 | 0.6 | 1.9 | 0.8 | 1575.42 ±1.023 | 4.0 | 1.5 (-14.0) | RHCP | 50 |
| DAE1575R1340B | 13x13 | 4.0 | 0.5 | 0.5 | 0.6 | 1.9 | 0.8 | 1575.42 ±1.023 | 4.0 | 1.5 (-14.0) | RHCP | 50 |
| DAE1375R1240A | 12x12 | 4.0 | 0.7 | 0 | 0.6 | 1.7 | 0.8 | 1575.42 ±1.023 | 4.0 | 1.5 (-14.0) | RHCP | 50 |
| DAE868R2540F | 25x25 | 4.0 | 1.9 | 0 | 0.6 | 3.3 | 0.8 | 868 | 2.0 | 1.5 (-14.0) | RHCP | 50 |
| DAE925R6150A | 61.5x61.5 | 5.0 | 7.6 | 0 | 0.6 | 3.2 | 0.8 | 925 | 8.0 | 1.5 (-14.0) | RHCP | 50 |
| DAE925R6170A | 61.5x61.5 | 7.0 | 7.6 | 0 | 0.6 | 3.2 | 0.8 | 925 | 8.0 | 1.5 (-14.0) | RHCP | 50 |
| DAE953R2540G | 25x25 | 4.0 | 1.9 | 0 | 0.6 | 3.3 | 0.8 | 953 | 3.0 | 1.5 (-14.0) | RHCP | 50 |
| DAE11762540H | 25x25 | 4.0 | 2.5 | 0 | 0.6 | 1.9 | 0.8 | 1175 | 10.0 | 1.5 (-14.0) | RHCP | 50 |
| DAE2338L2040C | 20x20 | 4.0 | 1.6 | 0 | 0.6 | 3.2 | 0.8 | 2338 | 56.0 | 1.5 (-14.0) | RHCP | 50 |
| DAE2338L2540B | 25x25 | 4.0 | 1.7 | 1.9 | 0.6 | 3.3 | 0.8 | 2338 | 48.0 | 1.5 (-14.0) | RHCP | 50 |
| DAE2338L2540D | 25x25 | 4.0 | 1.9 | 0 | 0.6 | 3.3 | 0.8 | 2338 | 56.0 | 1.5 (-14.0) | RHCP | 50 |
| DAE2338L2550B | 25x25 | 5.0 | 1.7 | 1.9 | 0.6 | 3.3 | 0.8 | 2338 | 46.0 | 1.5 (-14.0) | RHCP | 50 |
| DAE2338L2860B | 28x28 | 6.0 | 3.0 | 3.0 | 0.6 | 3.2 | 0.8 | 2338 | 120.0 | 1.5 (-14.0) | RHCP | 50 |
| DAE2338L2860C | 28x28 | 6.0 | 5.5 | 0 | 0.6 | 3.3 | 0.8 | 2338 | 220.0 | 1.5 (-14.0) | RHCP | 50 |
| DAE5810R1330C | 13x13 | 3.0 | 0.9 | 1.2 | 0.6 | 3.3 | 0.8 | 5810 | 400.0 | 1.5 (-14.0) | RHCP | 50 |

| Part Number | Dimensions | | | | | | | Nominal Freq (MHz) | Real Part at CF Ω | Imaginary Part at CF (Ω) | Polarization Model | Impedance (Ω) |
|---------------|------------|-----|---|---|---|-----|-----|--------------------|-------------------|--------------------------|--------------------|---------------|
| | L | H | A | B | C | D | Φ1 | | | | | |
| DAL1574X2006A | 20x6 | 4.0 | | | | 2.0 | 0.8 | 1575.42 | 80 ±10 | -45 ±10 | Linear | 50 |
| DAL1575X1606A | 16x6 | 4.0 | | | | 2.0 | 0.8 | 1575.42 | 70 ±10 | -85 ±10 | Linear | 50 |

Dimensions (mm)



DAE Series



DAL1575X

